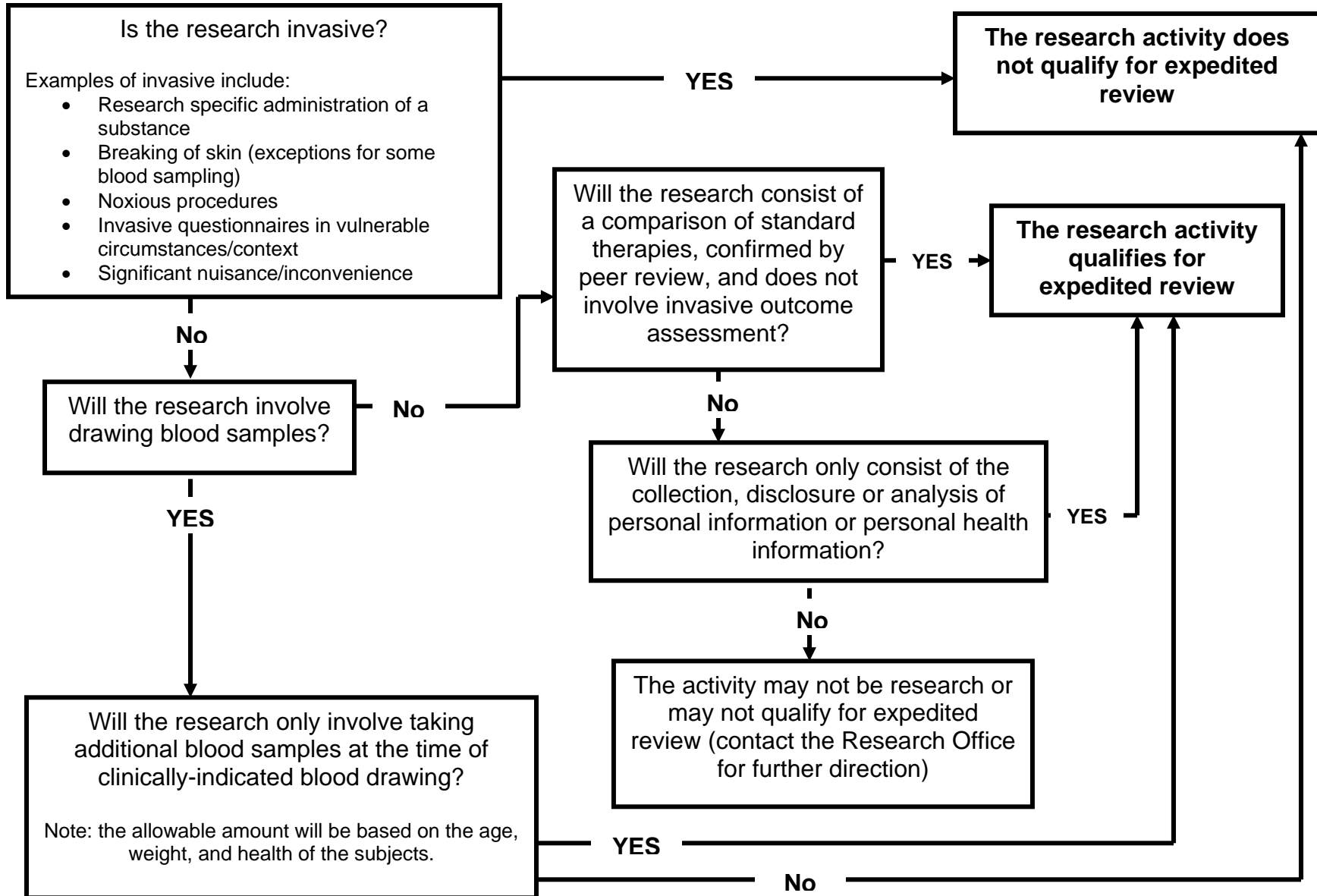


Research Decision Chart 6: Does the Research Activity Qualify for Expedited Review¹

(The Research Decision Charts are intended to assist researchers in understanding how various determinations are made regarding research projects. These charts are not to be used by researchers to make independent assessments for final decisions on classification of research projects or research requirements. All final classifications and requirement decisions are made through Trillium's Research Office)

START HERE



¹ As adapted from Health Canada's Research Ethics Board Criteria for Expedited Review